

The LynTec RPC Series Panel Power Control²



Every AC Power relay has to have a circuit breaker feeding it...

Why not use a controllable circuit breaker instead?

Controllable circuit breakers:

- **Save wall space**
- **Reduce installation costs**
- **Improve reliability**

Utilizing



remotely operated breakers.

Panel Features

- New programmable software platform can be customized for optimal power management.
- The LynTec controller increases interface options, simplifies programming, and adds remote status monitoring.
- One controller can control up to four panels reducing system cost.
- Audio, A/V and Lighting can now be controlled in individual panels within the same system.
- Plug-on control bus strips simplify wiring and installation.
- Panels ship fully loaded, reducing installation costs.
- 200% Neutrals standard
- 225A Main standard
- Easy setup for sequential system control of audio systems or individual circuit control of non-dimmed lighting circuits.
- The LynTec power supply improves system performance and provides for automatic load shedding and brownout protection.
- Dedicated isolated technical ground cabinet standard (optional for slave panels)
- Built in web server for easy viewing and setup with the browser of your choice.

What a difference a breaker makes!

Utilizing the **Super Reliable** Square D **G3** remotely operated circuit breaker!

The Best in Remote Operation

**Rated for
200,000 Cycles!**



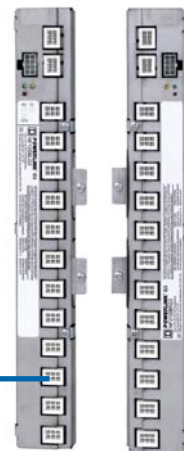
- ✓ Robust construction and highly effective trip mechanism provide unequalled remote operation capability in terms of electrical ratings and mechanical life.
- ✓ Motorized mechanism can open and close the contacts when the circuit breaker handle is in the ON position.
- ✓ Contacts cannot be closed remotely when the handle is in the OFF position or the circuit breaker is tripped.
- ✓ Manual override selector located on the front of the circuit breaker—necessary when emergency power control is required
- ✓ Contact status indication – the viewing window allows you to see the breaker's status.¹
- ✓ More robust control and breaker busses allow panels to ship fully loaded, saving installation costs.



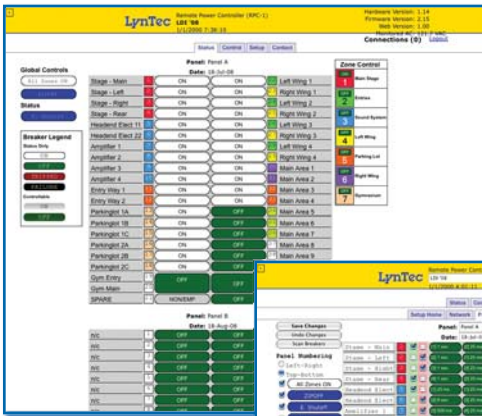
One, Two or Three pole
breakers available

Plug-in control bus
eliminates additional
low voltage wiring.

Control Connector



Software Features



Square D provides the state of the art remote power control platform. Add LynTec's revolutionary controller to the mix and you've got Power Control Squared!

The new LynTec controller comes with a web server built right in. You can access our web page through any browser to view set-up, control and monitor pages.

LynTec's simple color coding system lets you know the status of the breaker: is it controllable, on, off, tripped or in trouble?

The single set-up page provides the simplest and most flexible control that can be delivered. Intuitive point and click commands allow a user to:

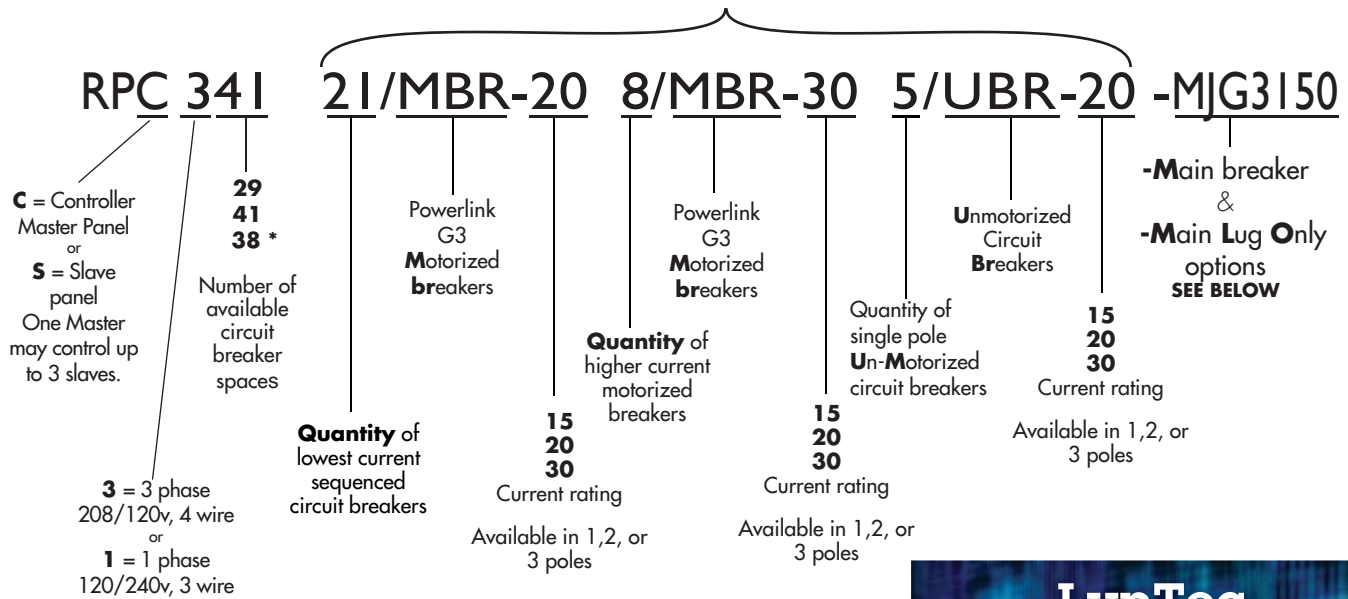
- Individually name each breaker for easy reference
- Set up an entire panel sequence for audio system powering
- Establish and populate up to 12 individual breaker groupings or zones for A/V or lighting control.
- Determine whether each zone should be turned on and off sequentially, as a group or if you'd like to add contact closure inputs for additional area control.
- In addition, sequencing delays can be customized between each sequenced step, and timer commands can be set by zone or individual breaker.

On the control page itself, every command selected on the set-up page can be implemented with a single click of your mouse. Or, you can control the panel commands via any controller of your choice provided that it can communicate in TCP/IP, RS-232, or DMX 512 protocols. RS-485 available upon request.

One controller can control up to four panels. This allows you to potentially control all your audio, lighting and A/V from one system.

Specifier's Guide for LynTec Remote Power Control Panels

Optional factory installed branch circuit breaker numbers



For Quotes or Specification help call
1-800-724-4047
 or visit our website at
www.LynTec.com



Small Panelboard

38" x 36" cabinet available in single phase or three phase.

Three Phase
 The standard three phase **RPC 329-xx** has a factory installed, bolt-on, back-fed, 3 pole, 100 Amp main breaker. [65kAIR] (AIR = Amps Interrupt Rating)
 Optional main breakers:
60A **-EGB-3060** (15 kVA transformer)
70A **-EGB-3070** (20 kVA)
80A **-EGB-3080** (23 kVA)
90A **-EGB-3090** (25 kVA)
125A.....**-EGB-3125** (45 kVA)

Single Phase
 The standard Single Phase **RPC 129-xx has a factory installed, bolt-on, two pole, back-fed 100 Amp main breaker. [65kAIR] (AIR = Amps Interrupt Rating)
 Optional main breakers:
60A **-EGB-2060** (10 kVA)
70A **-EGB-2070** (13 kVA)
80A **-EGB-2080** (15 kVA)
90A **-EGB-2090** (18 kVA)
125A ... **-EGB-2125** (23 kVA)
 (AIR = Amps Interrupt Rating)

Large Panelboard

56" x 28" cabinet available in single phase or three phase.

Three Phase
 The standard RPC 341-xx has a JGP36**225**, 3 pole, 225 Amp main breaker (65 kVA). 65k AIR.
 Optional main breakers [All 65kAIR]
125A.....**-MHG3125** (45 kVA transformer)
150A... **-MJG3150** (45 kVA)
175A.....**-MJG3175** (50 kVA)
200A.....**-MJG3200** (60 kVA)

Smaller main sizes are also available by replacing large main breaker with a 3 pole, bolt-on, back-fed breaker.
60A **-EGB-3060** (15 kVA)
70A **-EGB-3070** (20 kVA)
80A **-EGB-3080** (23 kVA)
90A **-EGB-3090** (25 kVA)
100A ... **-EGB-3100** (30 kVA)

***Note** This modification reduces the number of available branch breaker spaces from 41 to 38, hence a **RPC 341-xx** becomes a **RPC 338-xx**.
-MLO (Main Lug Only) is an option.

Single Phase
 The special order **RPC 141-xx** has the following main breaker options:
70A, 80A, 90A, 100A, 125A, 150A, 175A, 200A or **225A**.